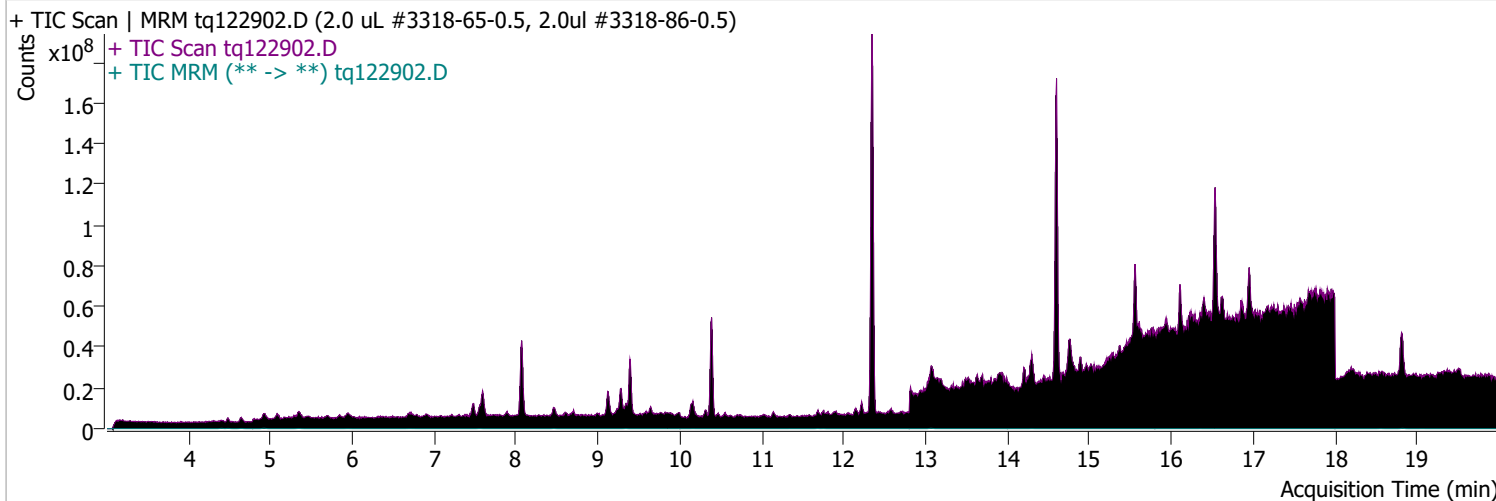


Quantitative Analysis Sample Report

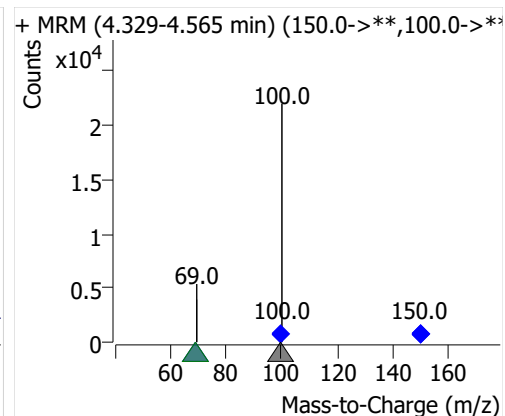
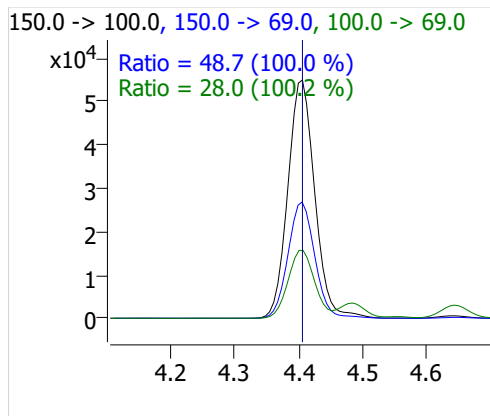
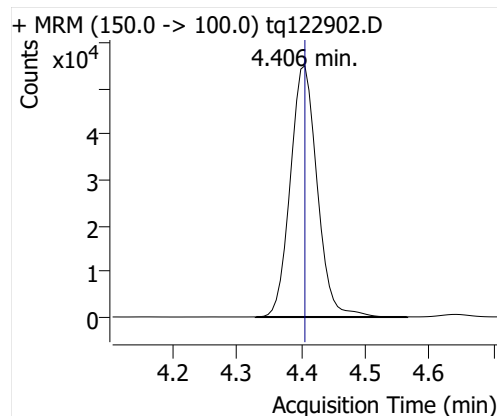
Batch Path	D:\MassHunter\GCMS\1\data\29dec22\QuantResults\29dec22.batch.bin		
Analysis Time	12/29/2022 2:43 PM	Analyst Name	TAI\us32_usr_ins22923
Report Time	1/5/2023 2:48:58 PM	Reporter Name	TAI\us32_usr_ins22923
Last Calib Update	12/28/2022 11:42 AM	Batch State	Processed
Quant Batch Version	10.1	Quant Report Version	10.1
Acq. Time	12/29/2022 2:07 PM	Data File	tq122902.D
Sample Type	CC	Sample Name	2.0 uL #3318-65-0.5, 2.0ul #3318-86-0.5
Dilution	1	Acq. Method	tq22m1209

Sample Chromatogram

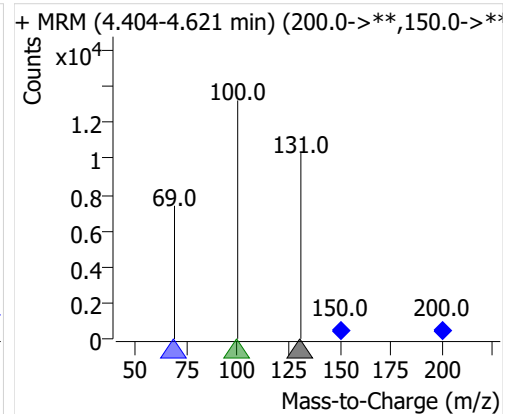
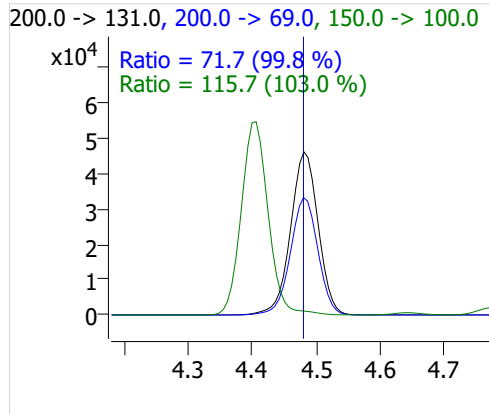
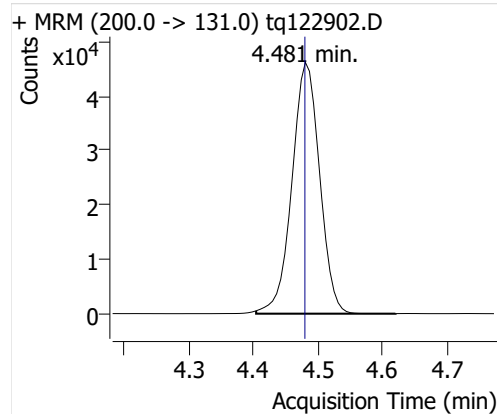


Compound	ISTD	RT	Resp.	ISTD Resp.	Resp. Ratio	Final Conc	Units
PFBA	6:2 FTOH-C13	4.406	160095	47286	3.3857	1.0104	ng
PFPeA	6:2 FTOH-C13	4.481	137842	47286	2.9151	0.9805	ng
PFHxA	6:2 FTOH-C13	4.645	64795	47286	1.3703	0.9898	ng
PFHpA	6:2 FTOH-C13	4.920	42858	47286	0.9064	0.9601	ng
PFOA	6:2 FTOH-C13	5.348	26232	47286	0.5548	0.9192	ng
4:2 FTOH	6:2 FTOH-C13	11.688	23672	47286	0.5006	1.0637	ng
5:2sFTOH	6:2 FTOH-C13	11.752	11768	47286	0.2489	1.0501	ng
7:2sFTOH	6:2 FTOH-C13	13.064	25165	47286	0.5322	1.0362	ng
6:2 FTOH	6:2 FTOH-C13	13.090	43790	47286	0.9261	1.0114	ng
8:2 FTOH-C13	6:2 FTOH-C13	14.300	18251	47286	0.3860	0.9909	ng
8:2 FTOH	6:2 FTOH-C13	14.300	12293	47286	0.2600	1.0018	ng
10:2 FTOH	6:2 FTOH-C13	15.376	4323	47286	0.0914	0.8386	ng
12:2 FTOH	6:2 FTOH-C13	16.357	17584	47286	0.3719	0.8893	ng
NMeFOSA	6:2 FTOH-C13	18.830	67480	47286	1.4270	0.8961	ng
NEtFOSA	6:2 FTOH-C13	18.831	61212	47286	1.2945	0.8981	ng

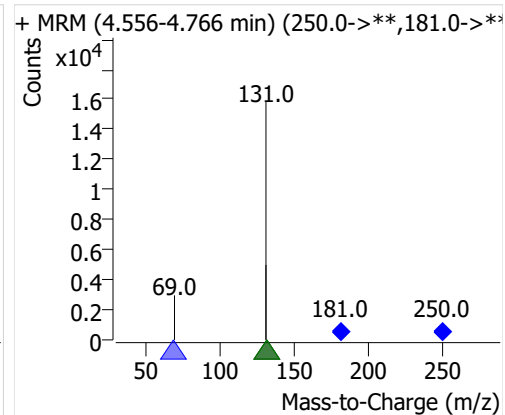
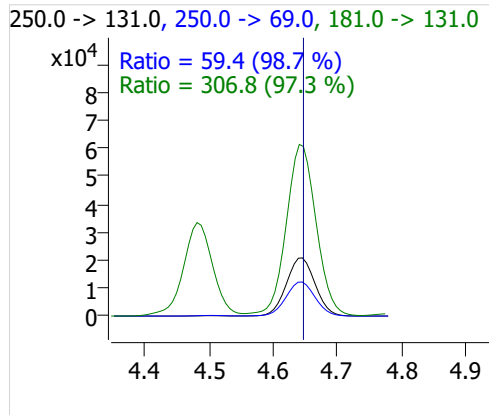
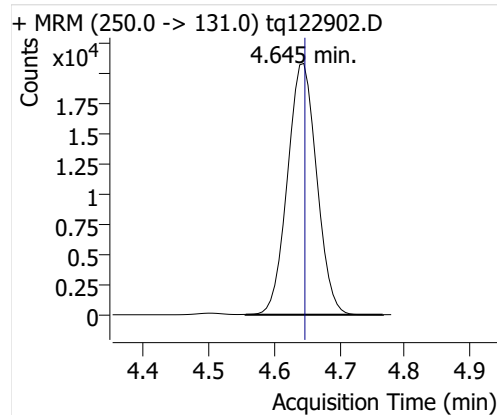
PFBA



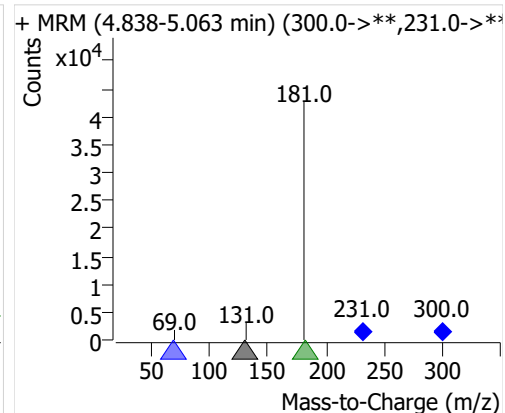
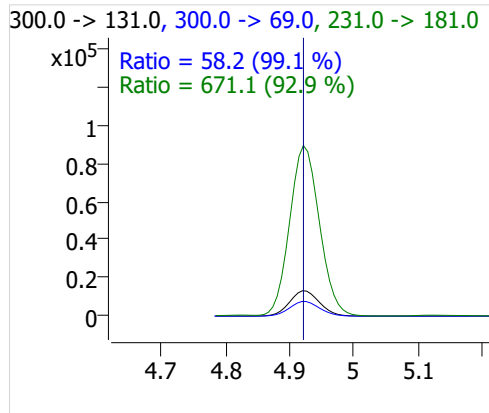
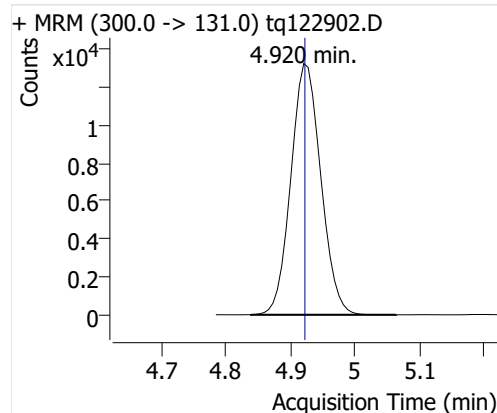
PFPeA



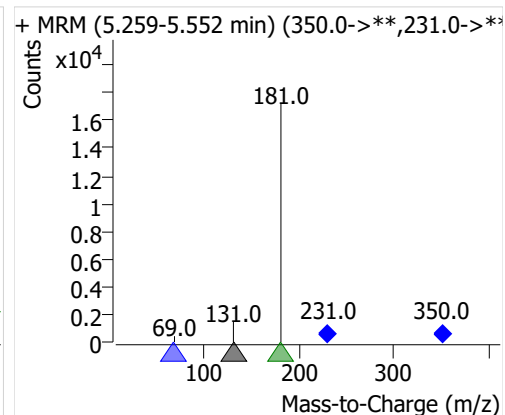
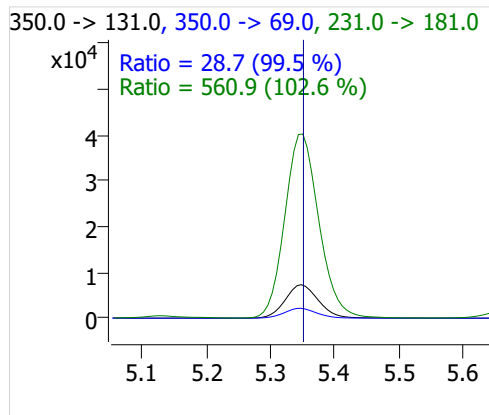
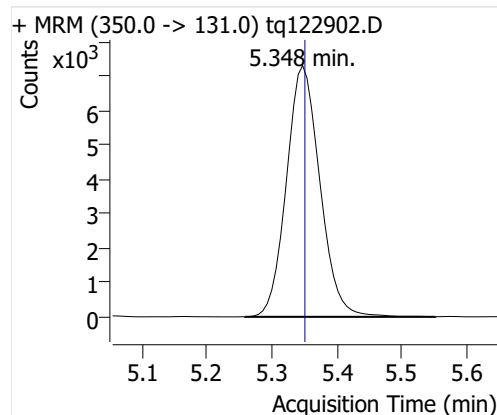
PFHxA



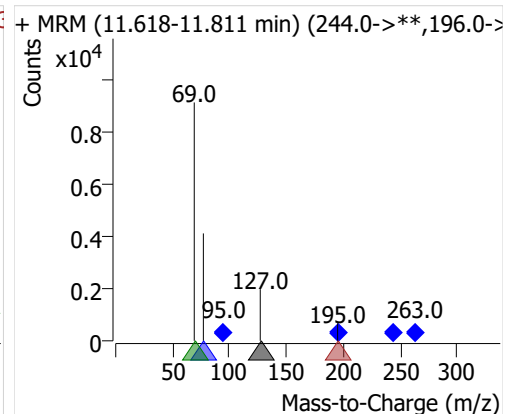
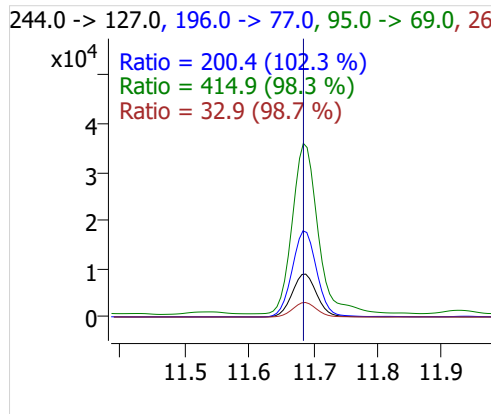
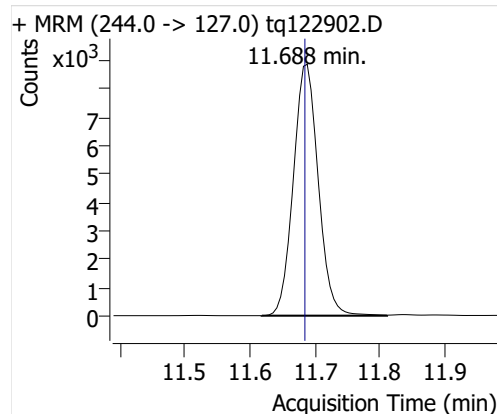
PFHpA



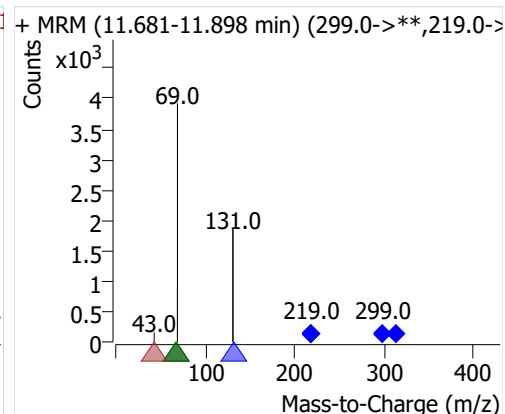
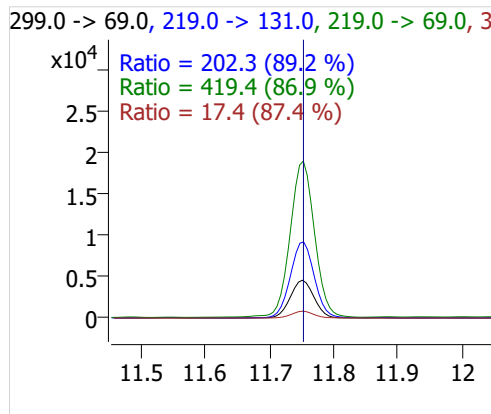
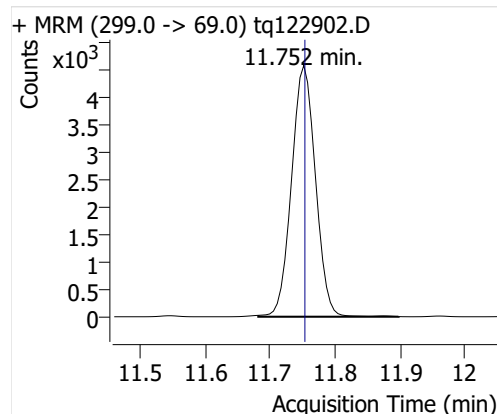
PFOA



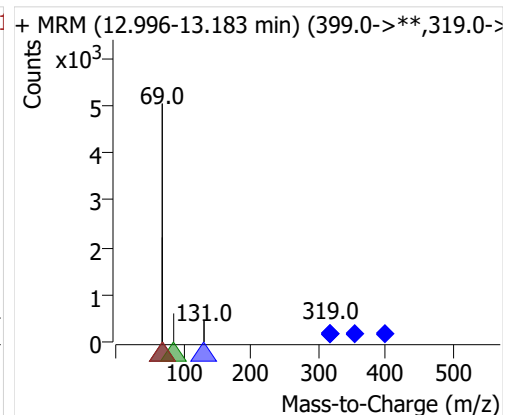
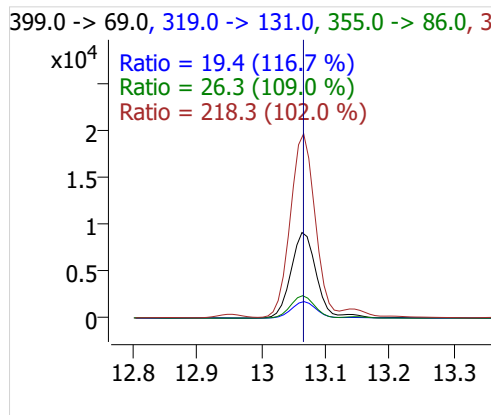
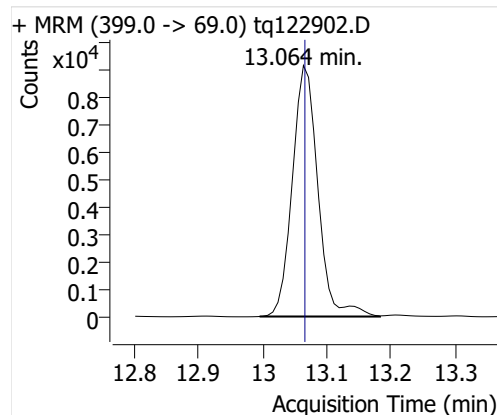
4:2 FTOH



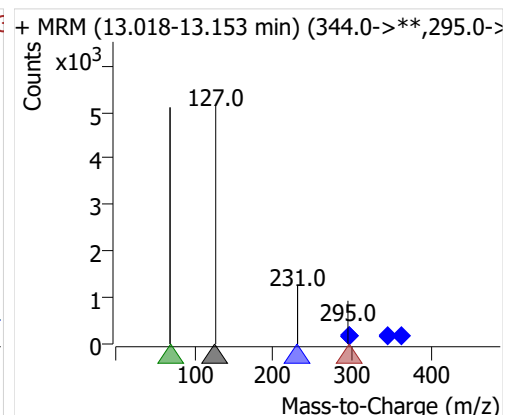
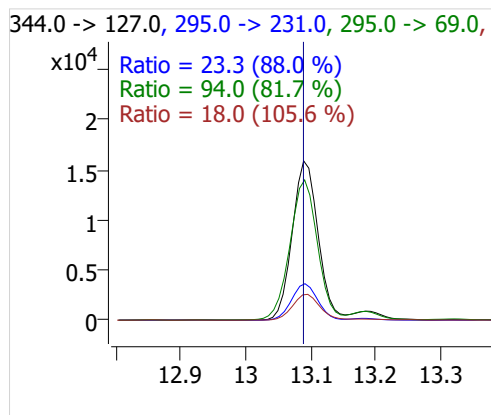
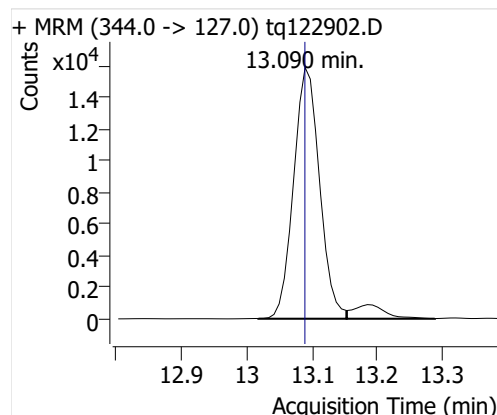
5:2sFTOH



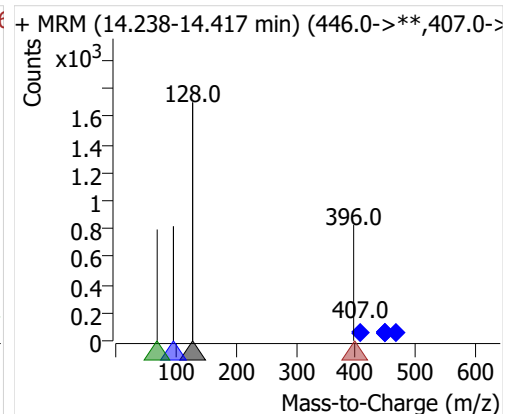
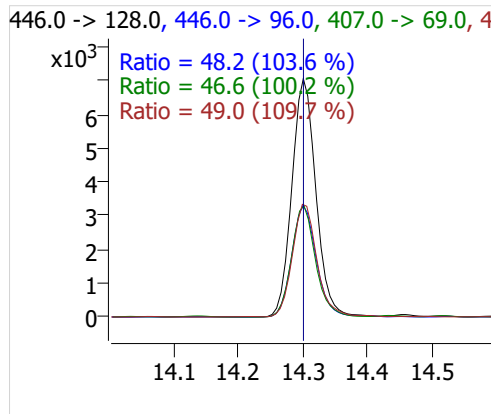
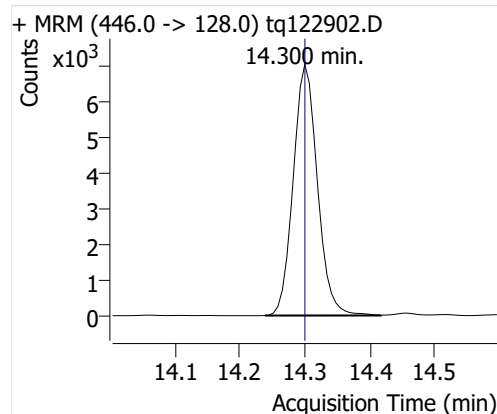
7:2sFTOH



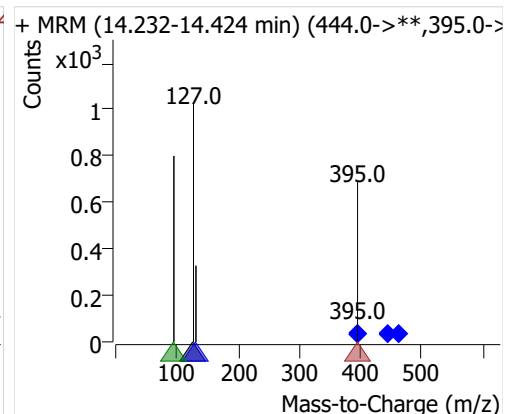
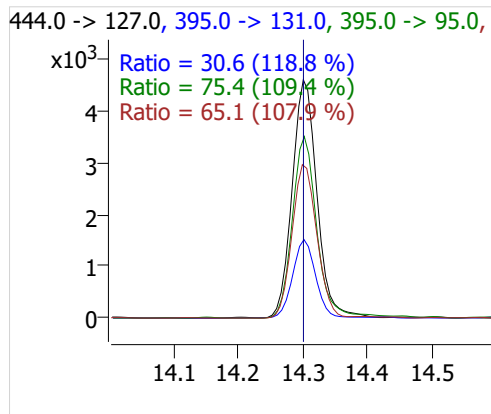
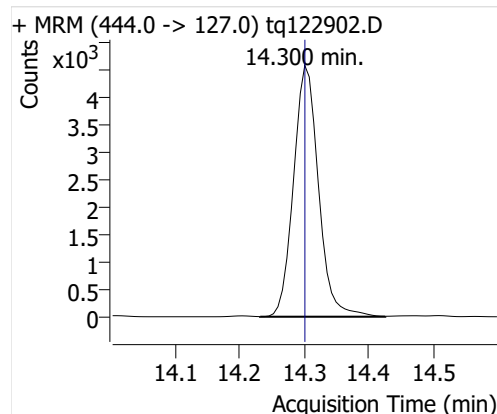
6:2 FTOH



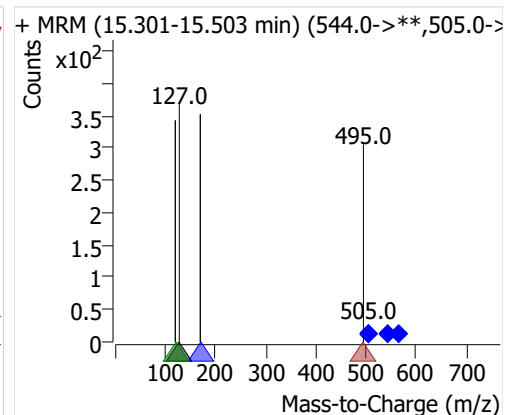
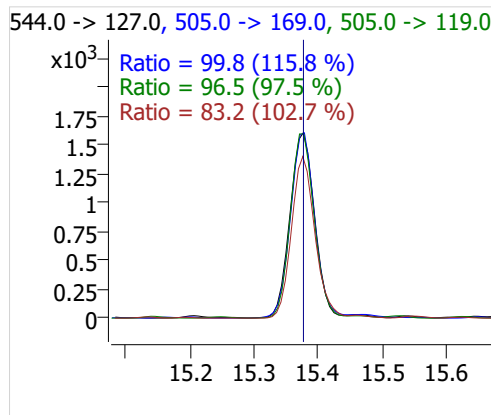
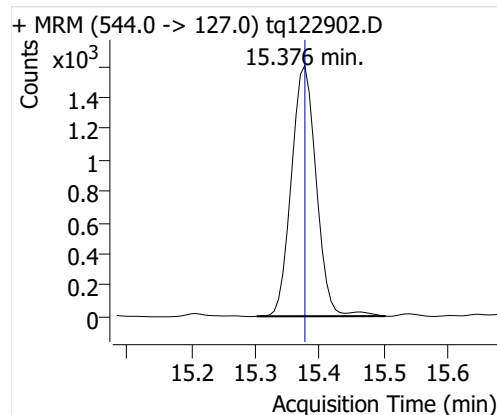
8:2 FTOH-C13



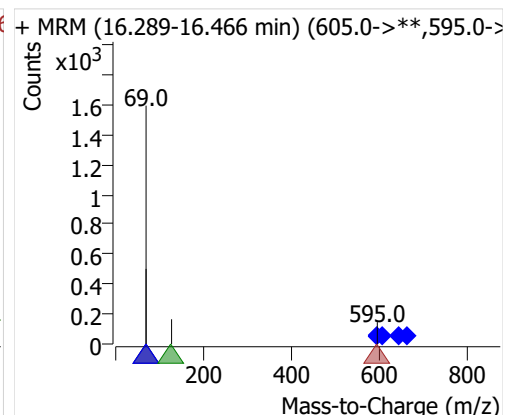
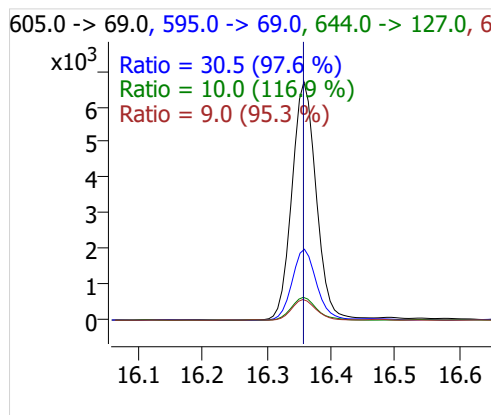
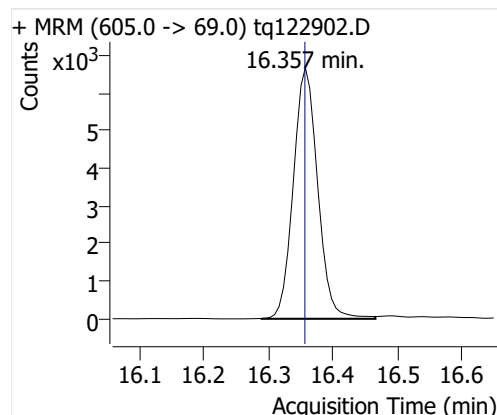
8:2 FTOH



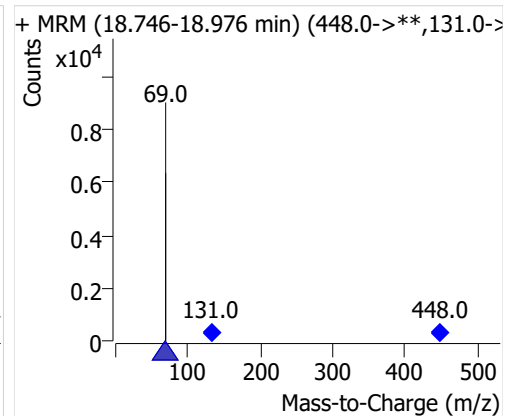
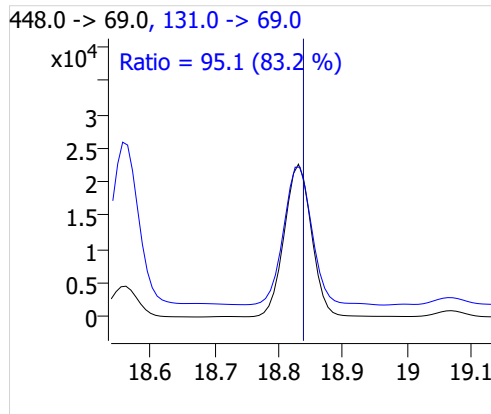
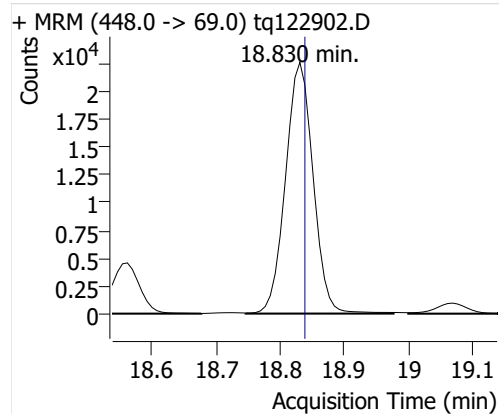
10:2 FTOH



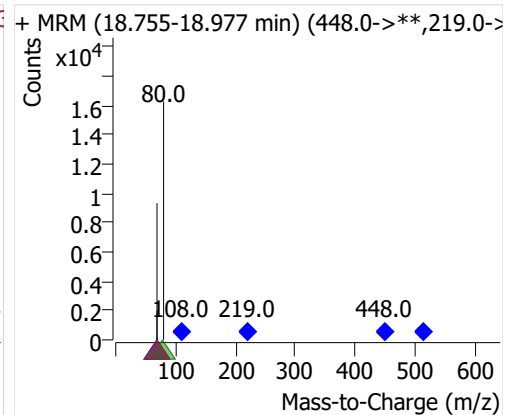
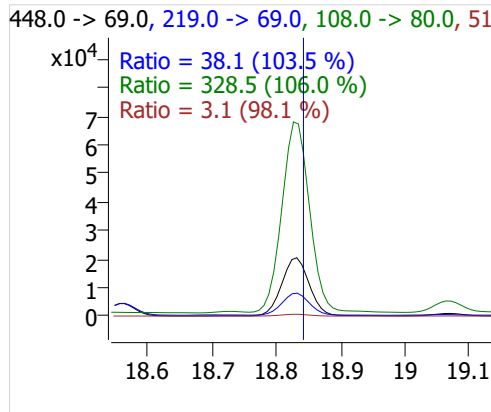
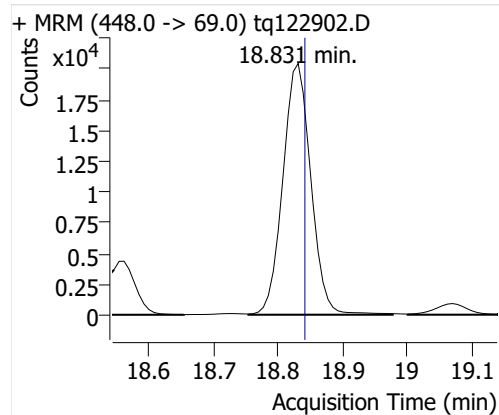
12:2 FTOH



NMeFOSA



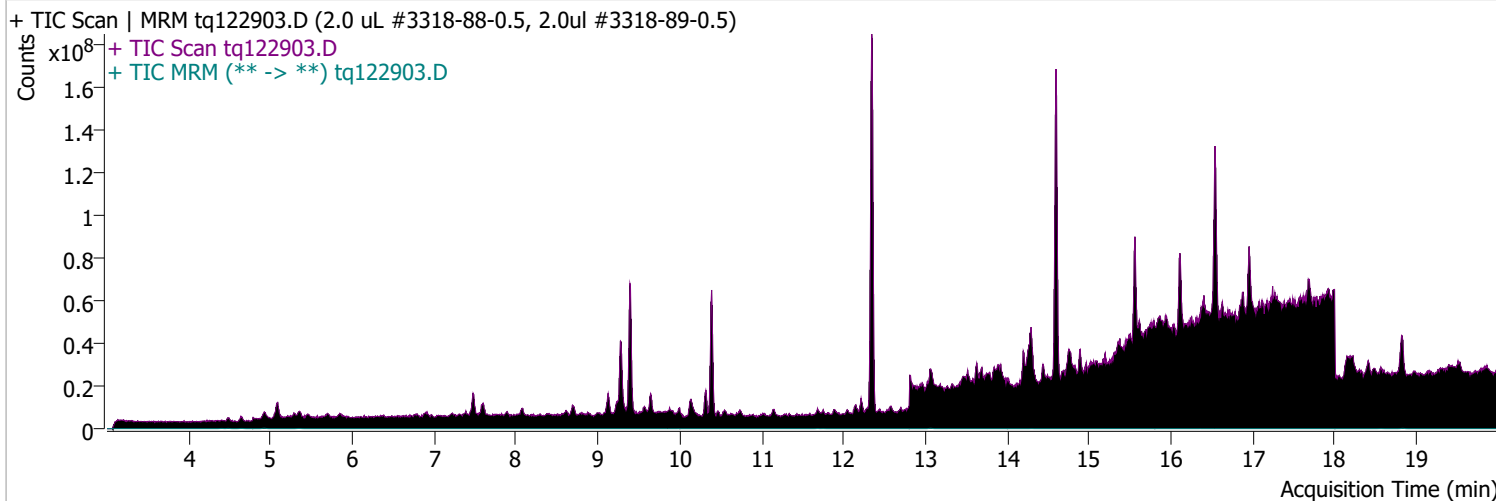
NEtFOSA



Quantitative Analysis Sample Report

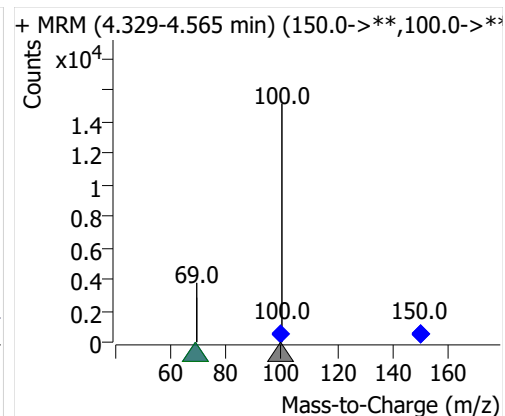
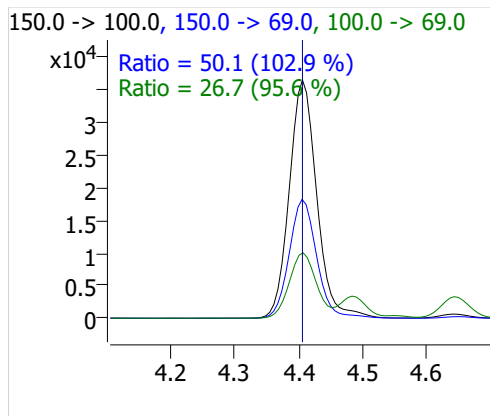
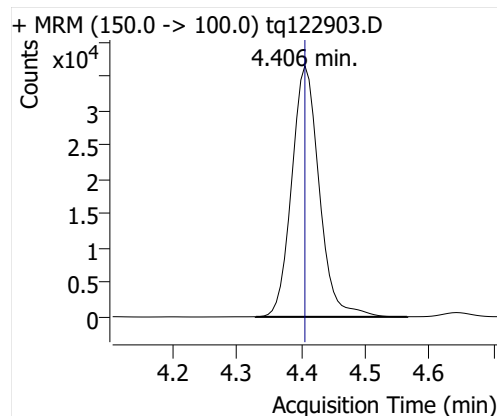
Batch Path	D:\MassHunter\GCMS\1\data\29dec22\QuantResults\29dec22.batch.bin		
Analysis Time	12/29/2022 2:43 PM	Analyst Name	TAI\us32_usr_ins22923
Report Time	1/5/2023 2:49:02 PM	Reporter Name	TAI\us32_usr_ins22923
Last Calib Update	12/28/2022 11:42 AM	Batch State	Processed
Quant Batch Version	10.1	Quant Report Version	10.1
Acq. Time	12/29/2022 2:31 PM	Data File	tq122903.D
Sample Type	QC	Sample Name	2.0 uL #3318-88-0.5, 2.0uL #3318-89-0.5
Dilution	1	Acq. Method	tq22m1209

Sample Chromatogram

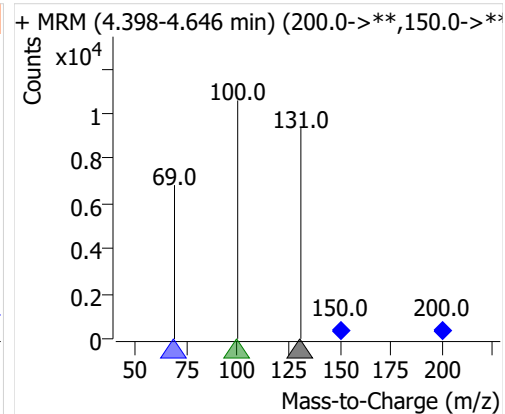
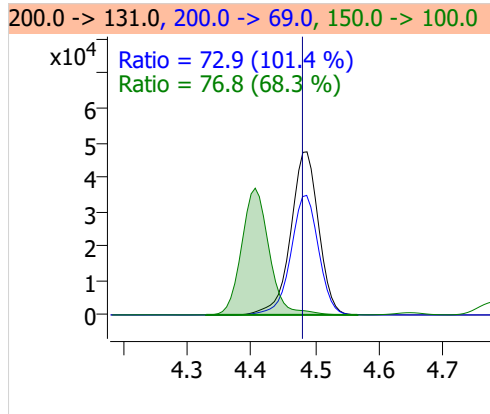
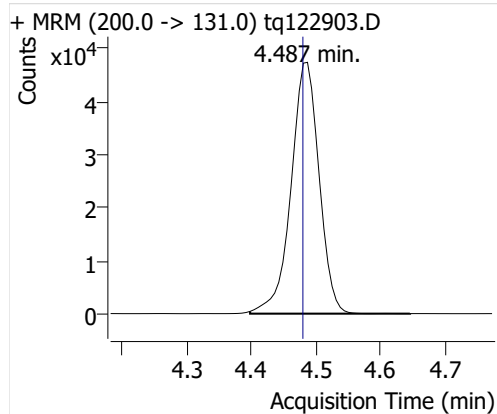


Compound	ISTD	RT	Resp.	ISTD Resp.	Resp. Ratio	Final Conc	Units
PFBA	6:2 FTOH-C13	4.406	108821	47459	2.2930	0.6843	ng
PFPeA	6:2 FTOH-C13	4.487	143054	47459	3.0143	1.0139	ng
PFHxA	6:2 FTOH-C13	4.645	68603	47459	1.4455	1.0442	ng
PFHpA	6:2 FTOH-C13	4.927	42758	47459	0.9009	0.9543	ng
PFOA	6:2 FTOH-C13	5.348	25098	47459	0.5288	0.8762	ng
4:2 FTOH	6:2 FTOH-C13	11.682	21014	47459	0.4428	0.9408	ng
5:2sFTOH	6:2 FTOH-C13	11.752	10163	47459	0.2142	0.9036	ng
7:2sFTOH	6:2 FTOH-C13	13.064	22664	47459	0.4775	0.9298	ng
6:2 FTOH	6:2 FTOH-C13	13.090	38319	47459	0.8074	0.8818	ng
8:2 FTOH-C13	6:2 FTOH-C13	14.293	17330	47459	0.3652	0.9375	ng
8:2 FTOH	6:2 FTOH-C13	14.294	11392	47459	0.2400	0.9250	ng
10:2 FTOH	6:2 FTOH-C13	15.370	3657	47459	0.0771	0.7069	ng
12:2 FTOH	6:2 FTOH-C13	16.356	14099	47459	0.2971	0.7105	ng
NMeFOSA	6:2 FTOH-C13	18.830	67981	47459	1.4324	0.8995	ng
NEtFOSA	6:2 FTOH-C13	18.831	61282	47459	1.2913	0.8958	ng

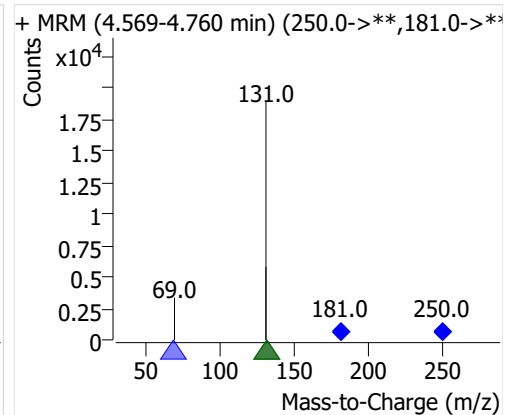
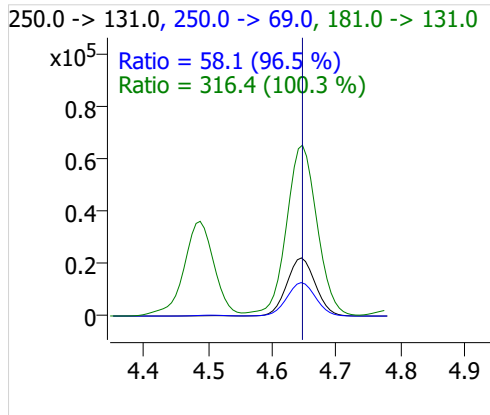
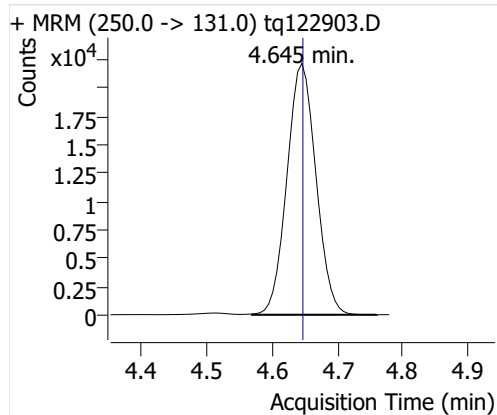
PFBA



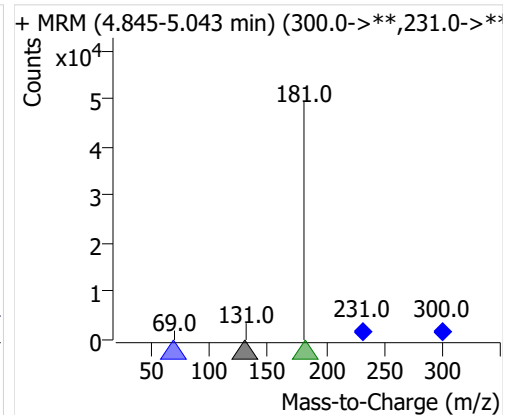
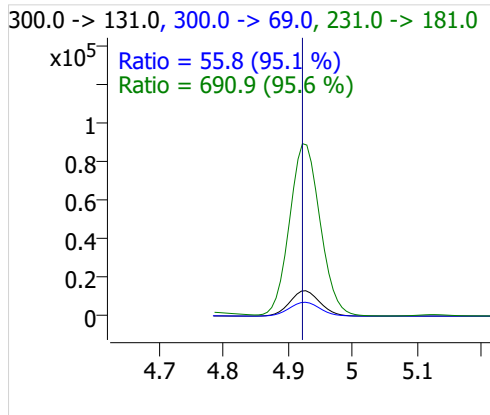
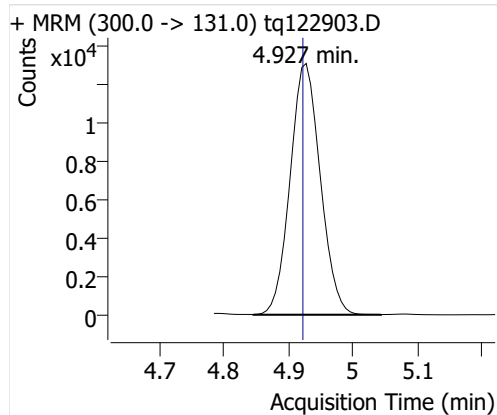
PFPeA



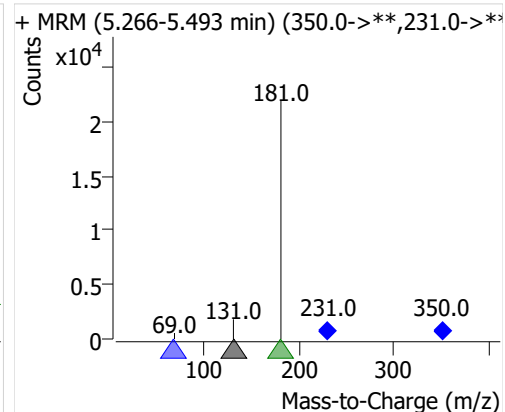
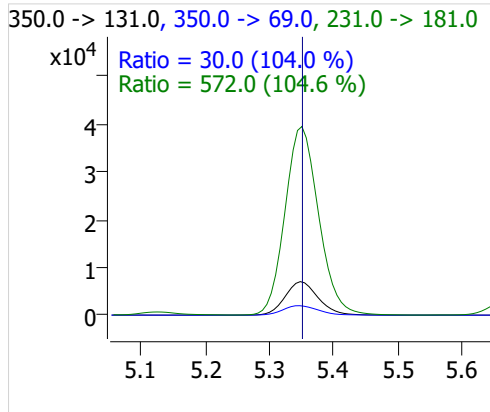
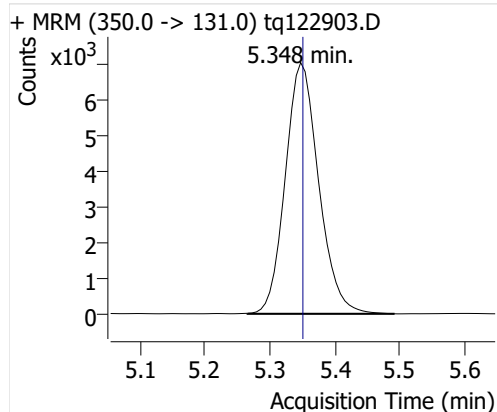
PFHxA



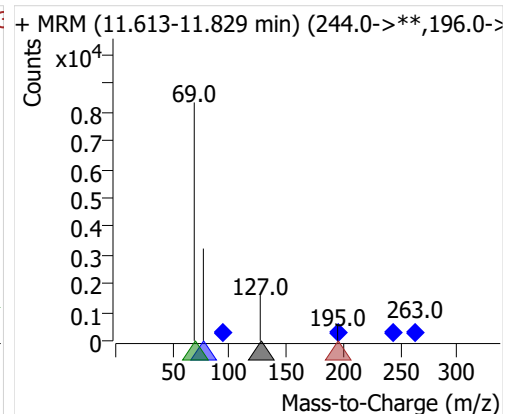
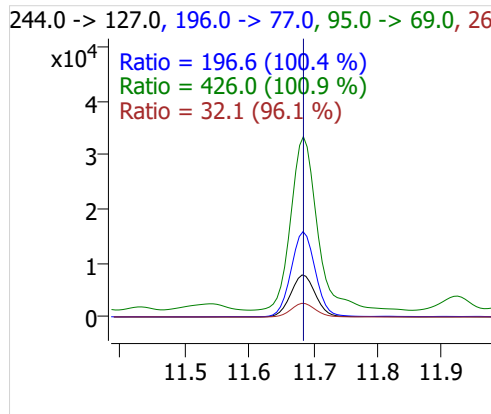
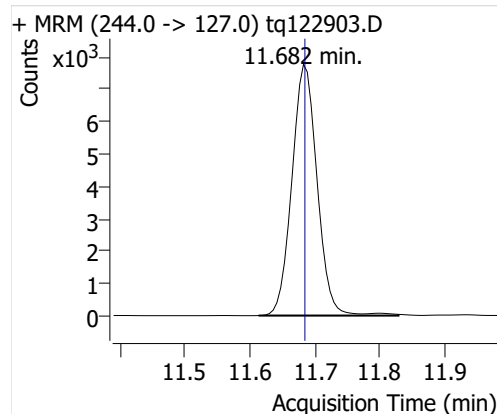
PFHpA



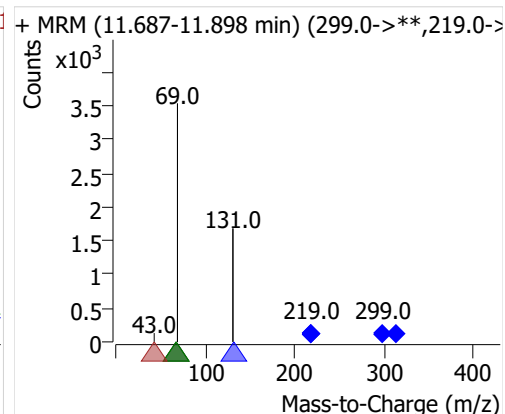
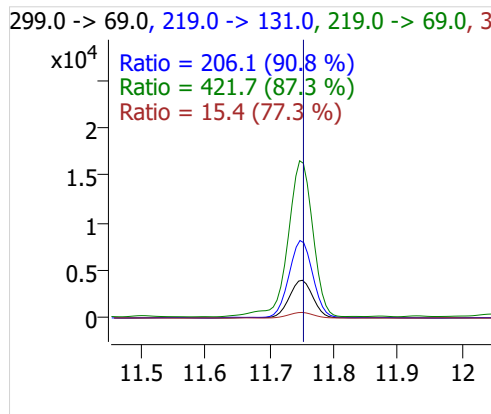
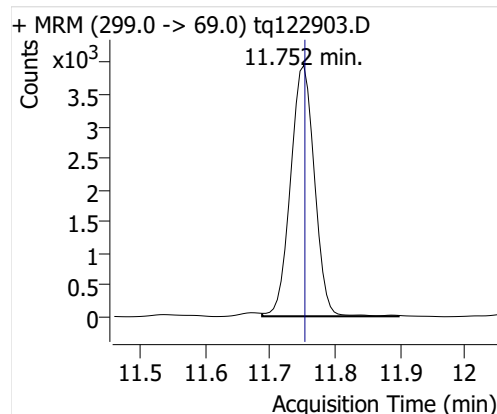
PFOA



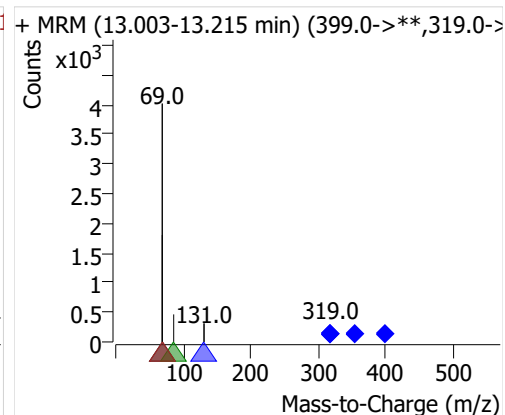
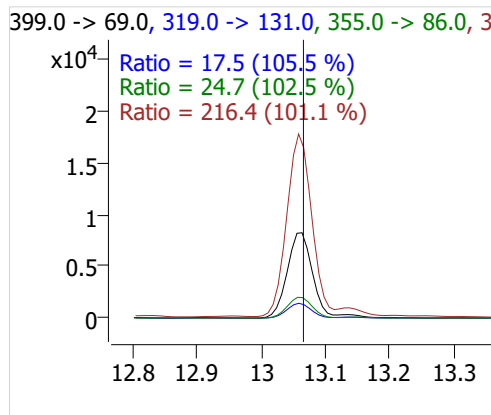
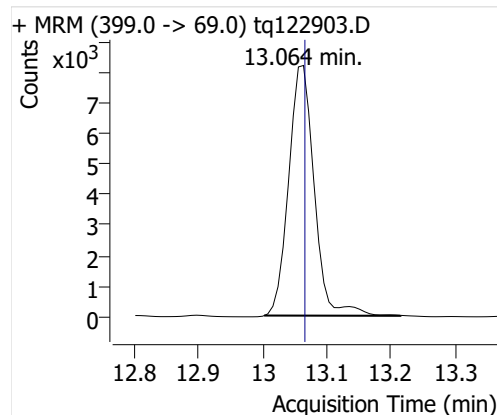
4:2 FTOH



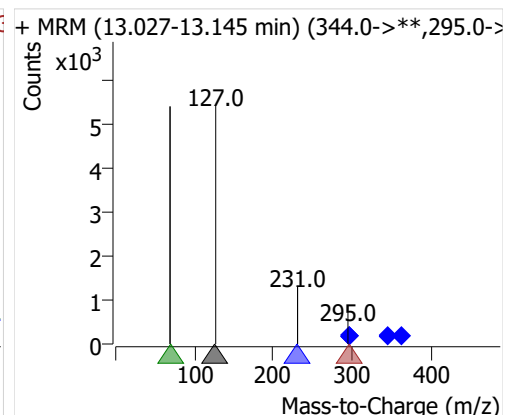
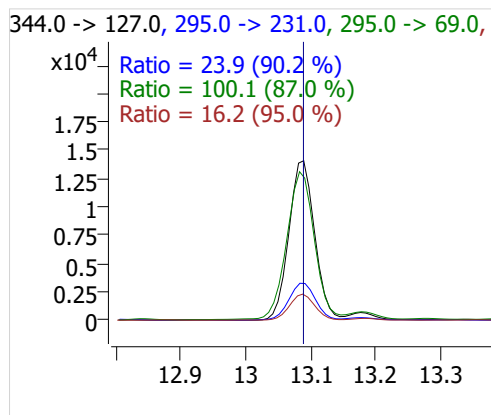
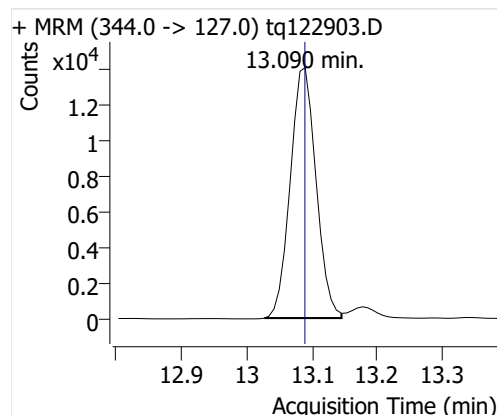
5:2sFTOH



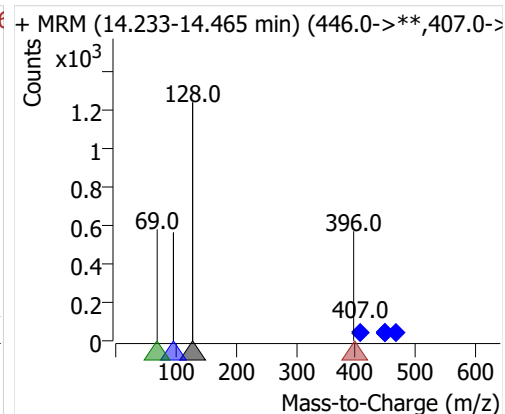
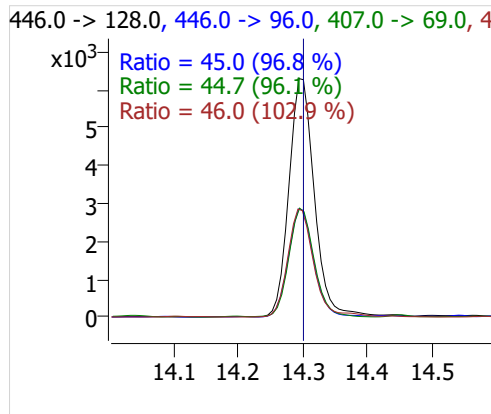
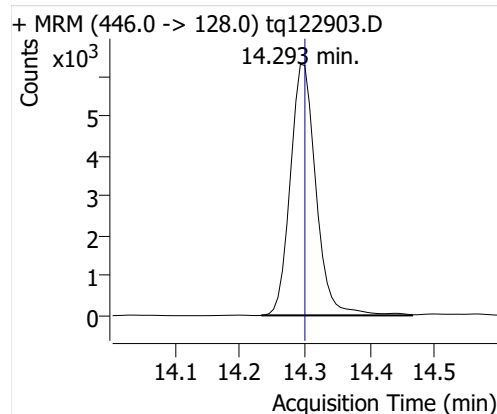
7:2sFTOH



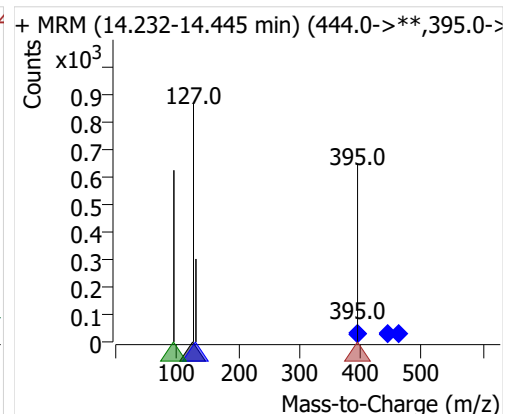
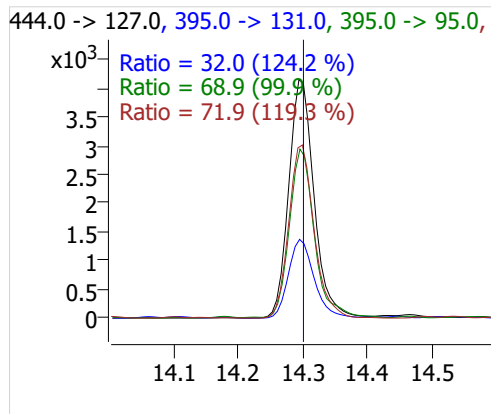
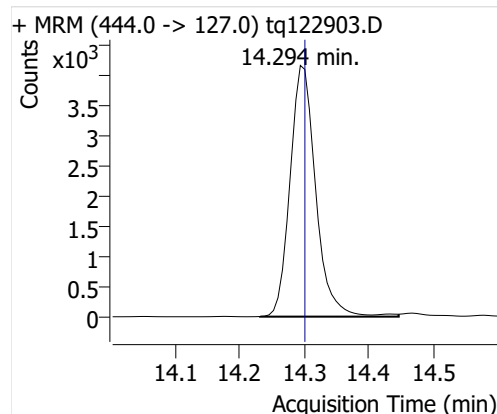
6:2 FTOH



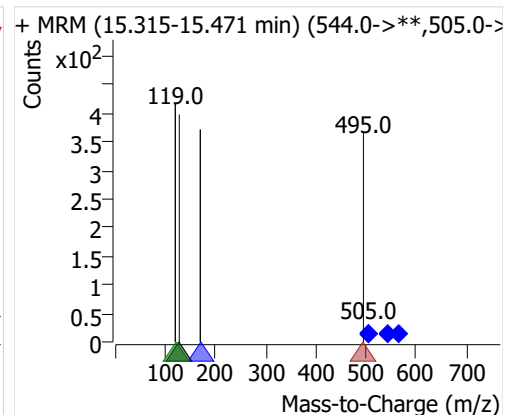
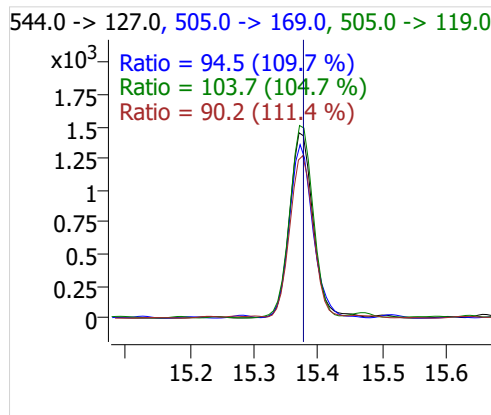
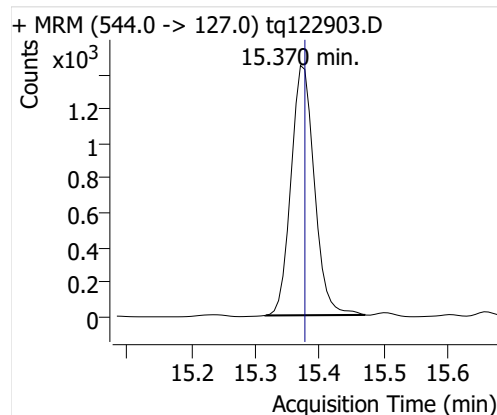
8:2 FTOH-C13



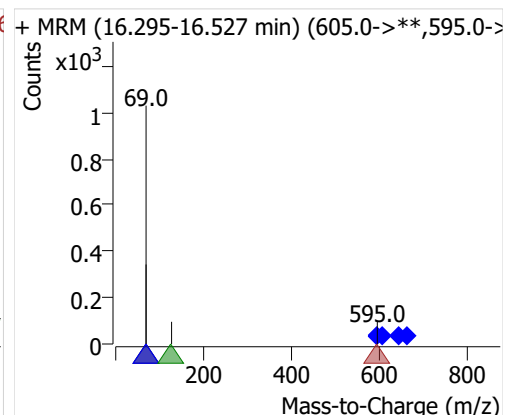
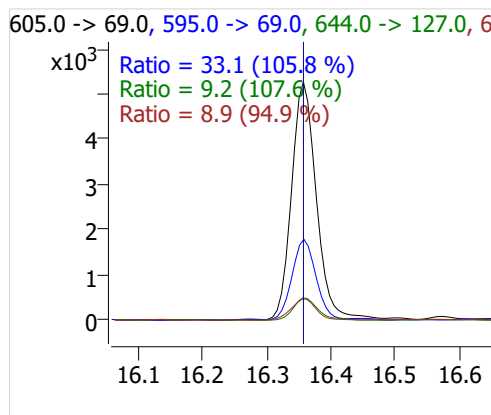
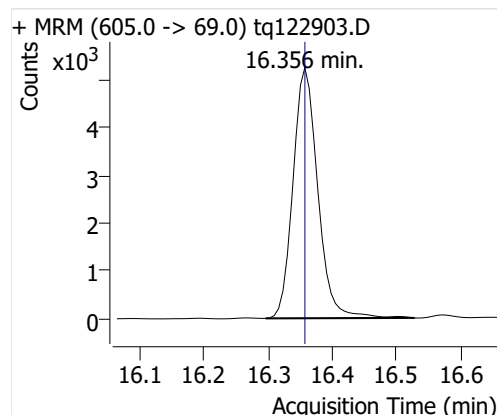
8:2 FTOH



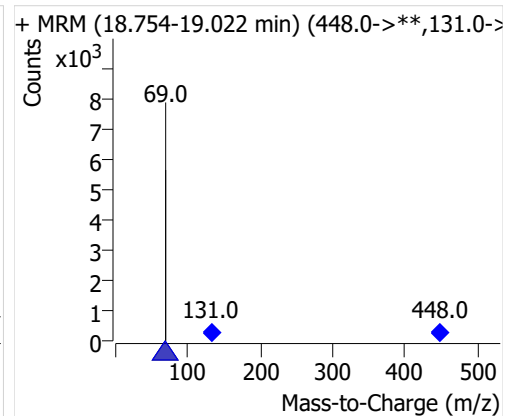
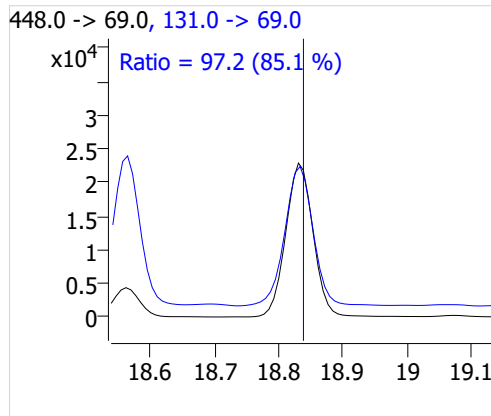
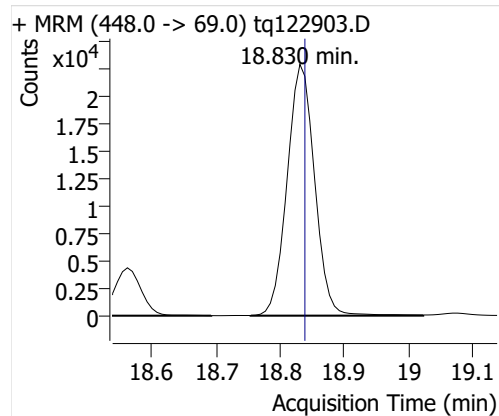
10:2 FTOH



12:2 FTOH



NMeFOSA



NEtFOSA

